

Data Sheet no. 8.14/5

Medium-Voltage Tank-Type Reactors, Types DE

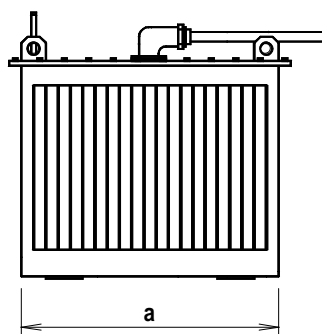
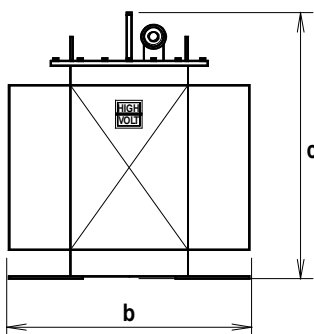
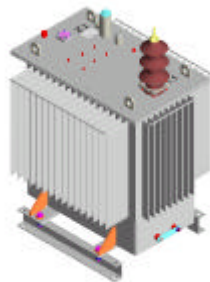
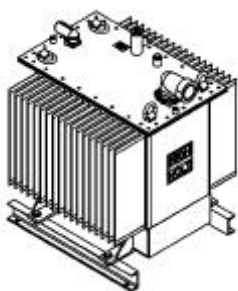
Description:

Medium-Voltage Tank-Type Reactors have been developed for use in Resonant Test Systems with variable frequency for the on-site testing of medium-voltage cables. They are also suited for on-site testing of any capacitive test objects with high capacitance, like generators or capacitor banks.

These resonant reactors are realised in conventional tank-type design with oil-paper insulation and natural oil cooling. The reactors are especially designed for on-site testing including frequent transportation and outdoor operation. The multi-gap core is made of high-quality grain-oriented transformer sheet and enables together with the layer-type winding a high quality factor of the resonant circuit.

The high voltage is led out through a conventional porcelain bushing or a transformer elbow bushing (female). A connection cable with a corresponding plug (male) at the one end and a cable termination at the other end is meant for the connection to the test object. A bushing plug can be inserted into the transformer elbow bushing for the case that the connection to the test object shall be made by a bare wire.

The reactors may be used also at lower frequencies than at maximum voltages. In this case the voltage is reduced to avoid that the current exceeds its rated value. The maximum current is available down to the lowest specified frequency (e.g. 20 Hz).



type		DE 720/36-10	DE 1000/36-17	DE 2000/45-23	DE 500/50-6	DE 1000/50-25*	
Voltage	kV	36	36	45	50	50	25
Inductance	H	22.9	11.3	12.5	44	21.7	5.4
Current	A	10	17	23	6	12.5	25
Duty cycle at max. current	min	60 min ON 60 min OFF 3 cycles per day (at 20°C)		30 min ON 60 min OFF 16 cycles per day (at 40°C)			
Load capacitance at max. voltage	nF	12-1770	25 – 3580	22.5 – 3240	6.4 – 640	13 – 1300	52 – 5200
Frequency range	Hz	20-300					
Lowest frequency at max. voltage	Hz	25	30	25	30	30	30
Length (a)	mm	890	1150	1250	960	1150	
Width (b)	mm	760	940	1150	890	940	
Height (c)	mm	1400	1070	1450	1150	1360	
Total Weight	kg	885	1250	2310	1010	1800	
Weight of oil	kg	185	340	490	245	410	

* with switch-over between parallel and series connection of the reactor coils
- dimensions with elbow bushing

Modification of the technical data on request.

For further information please contact:

or our local representative:

HIGHVOLT Prüftechnik Dresden GmbH

Marie-Curie-Straße 10

D-01139 Dresden / Germany

Tel. ++49 351 8425-648

Fax ++49 351 8425 679

e-mail dresden@highvolt.de

internet <http://www.highvolt.de>