

Data Sheet 5.51-10/3

## Input Voltage Divider for HiRES Measuring System, Type HiRES Div ...

### Application

For higher input voltage levels of the HiRES measuring system which may be needed for certain measurements the HiRES Div series of precise input voltage dividers provides this extended range. They are connected between the signal source and the input of the measuring channel or probe.

### Main features

- High precision
- Overvoltage protection
- Available for both internal and optically connected measuring channels

Table 1: Main parameters

Type	HiRES Div 1000	HiRES Div 2000
Divider ratio	100:1	200:1
Input impedance	1 M $\Omega$ / 40 pF	1 M $\Omega$ / 45 pF
Analog bandwidth (-3 dB)	> 120 MHz	> 120 MHz
Full scale input voltage range	$\pm$ 1000 V peak	$\pm$ 2000 V peak
Overvoltage protection	$\pm$ 1200 V peak	$\pm$ 2400 V peak

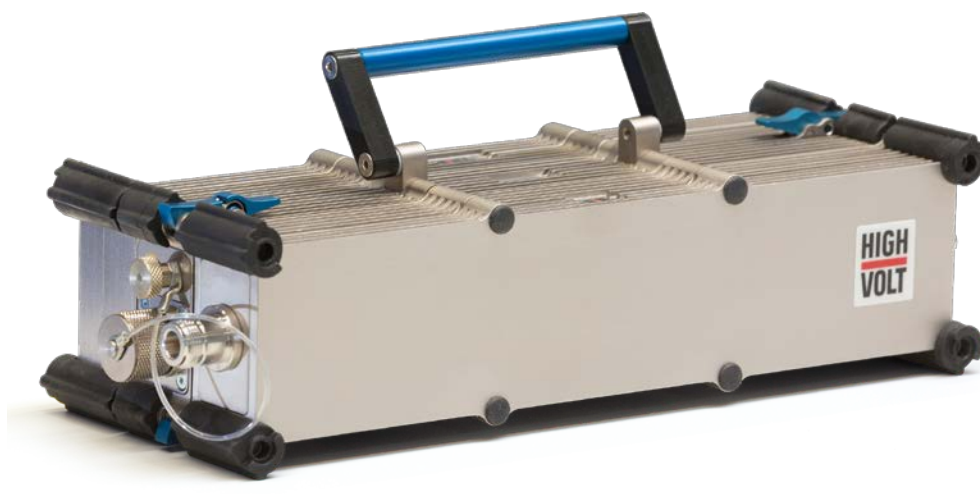


Figure 1: HiRES Div 1000 together with HiRES Probe 100-14 FO