

Data Sheet 5.61-2/1¹⁾

Software Package for Transformer Test, Type HiRES IAS TRA

General

For testing transformers with lightning and switching impulse an impulse generator, divider and measuring equipment are necessary. For comfortable measurements a HiRES measuring system will be used. The HiRES is controlled by the impulse analyzer software HiRES IAS main software package. This application is prepared for transformer type and routine tests. Special dialogs and menus allow an easy and convenient use.

Software requirements

The HiRES IAS TRA is an additional software package of the main software HiRES IAS (see data sheet 5.61-1), that means, the main software HiRES IAS is necessary to use HiRES IAS TRA.

Parameter settings

For ease of use the interface only requires the entry of very few parameters. Whereas the left side of the display shows the recorded wave shapes, the right side is used to set the measuring parameters such as peak voltage, polarity, time deflection, undershoot in just one setup dialog. The software controls the related internal functions.

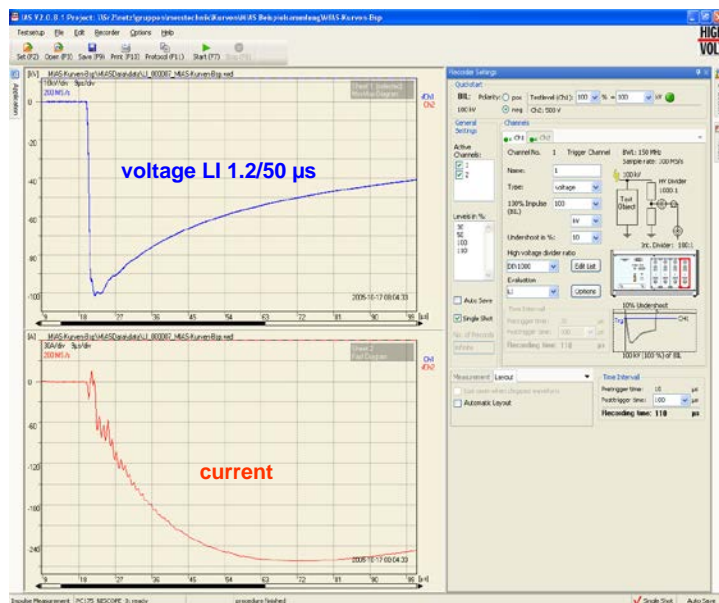


Figure 1: Screenshot of HiRES IAS TRA, measurement

¹⁾ The prior version of the Data Sheet was 5.62-1/1.

Quick start and parameter display

In case identical test routines are applied, short cuts and quick start functions on the upper side of the display allow very fast, low user interaction measurements. Evaluated parameters are shown on the right side of the display.

Analyzing features

Additionally to the standard evaluation methods the following functions are available:

- Compare / Normalize Function
- TF Transfer Function

Compare, normalize and transfer function (transformer analysis dialog)

These functions will be used to analyze the transformer. The big advantage of one dialog is the ease of use. The reference and the test impulse can easily be selected. After that, the type of analysis and the result channels can be selected. With the evaluation button or the start button the function starts evaluating. The curves will be loaded, evaluated and displayed automatically. No other settings are necessary. Additionally, it is possible to use the transformer analysis quick start button.

Transformer analysis dialog:

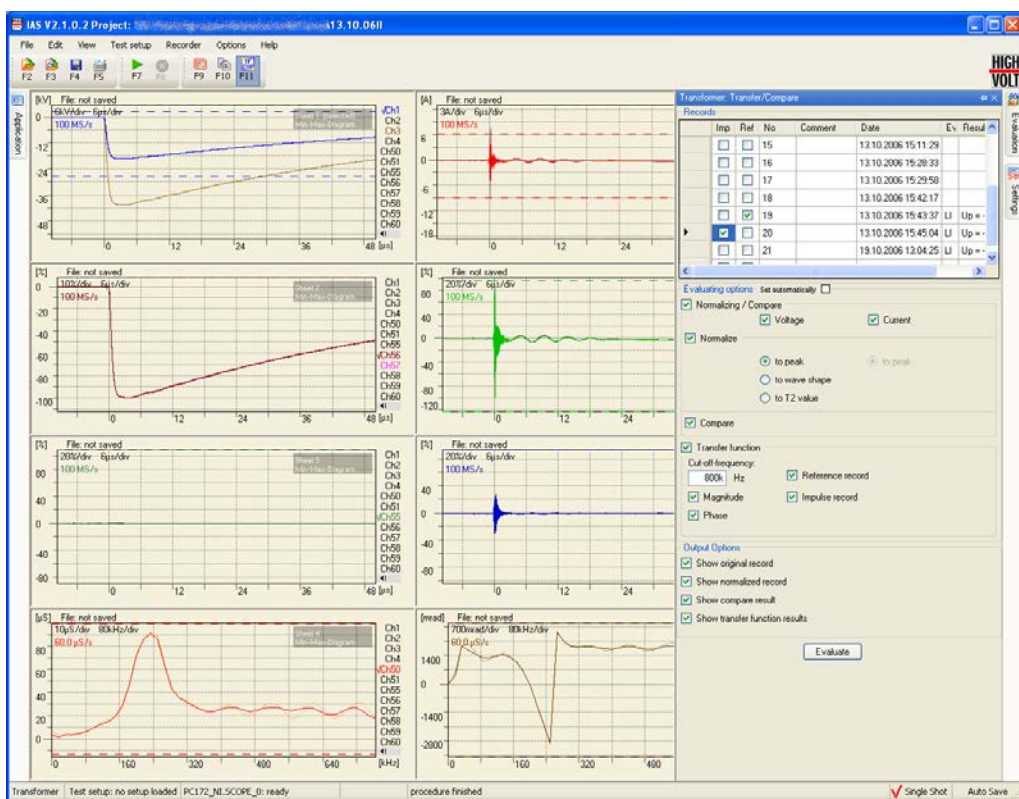


Figure 2: Screenshot of HiRES IAS TRA, transfer function and comparison

Attention: The normalized curve is always positive. This has the big advantage that curves with different polarity and curves with the same polarity can easily be compared.

Print or copy to clip board is always possible. The next picture shows one example.

Results of transfer function of a transformer, print view:

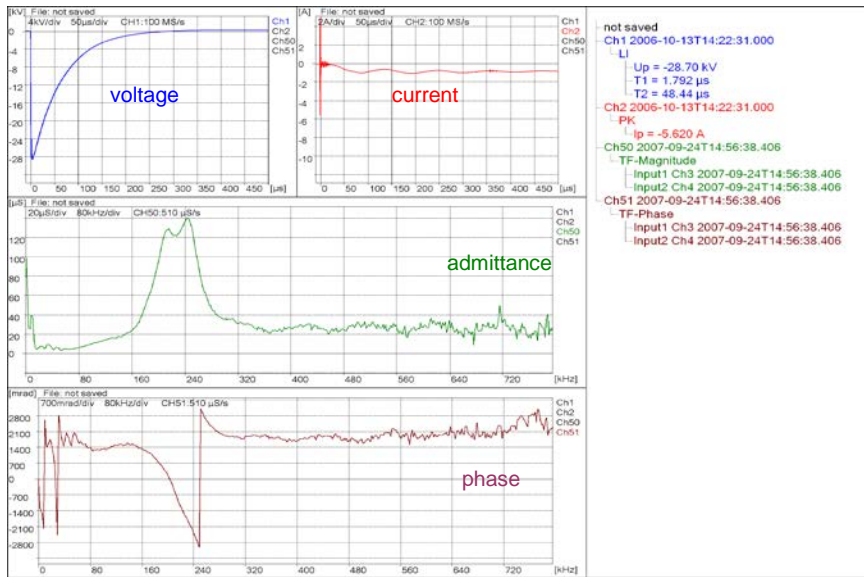


Figure 3: Picture copied to clip board

Report generator

- Create your report as MS-Word document
- Select the curves for your report freely or filter them by type of evaluation
- Record preview
- Select the columns for your summary table (Peak voltage, T1, T2, ...)
- Use a MS-Word document as template
- Adjust the no. of pictures per page

Report generation dialog:

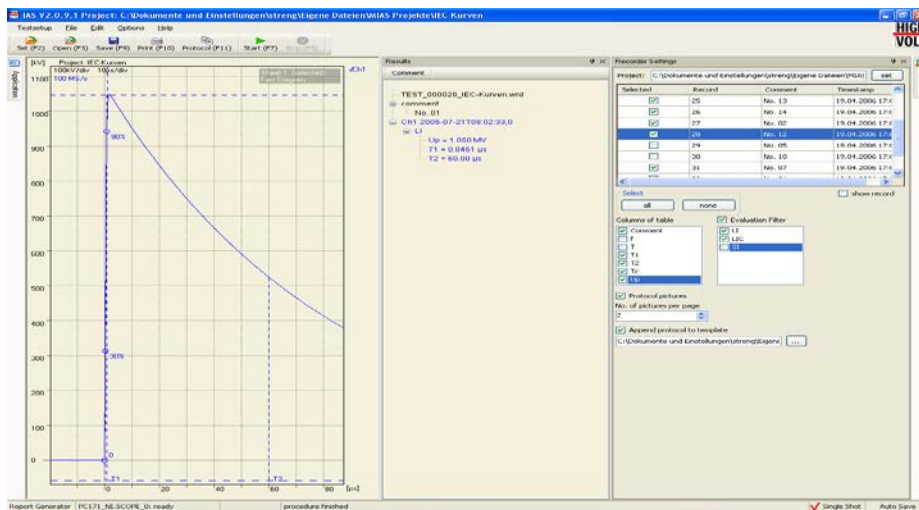


Figure 4: Screenshot of HiRES IAS TRA, report generation