

Data Sheet 5.62-5/1¹⁾

Online Mathematics Software Module for HiRES Advanced, Type HiRES Advanced Math

Application

The software package HiRES Advanced Math is an extension module for the HiRES Advanced main software module. It allows complex mathematical operations on measurement data.

Main features

- Mathematical functions, e.g. FFT, Sin, Cos, RMS etc.
- Powerful formula interpreter
- Generation of mathematically derived channels
- Conditional calculations with If- and Goto-statements

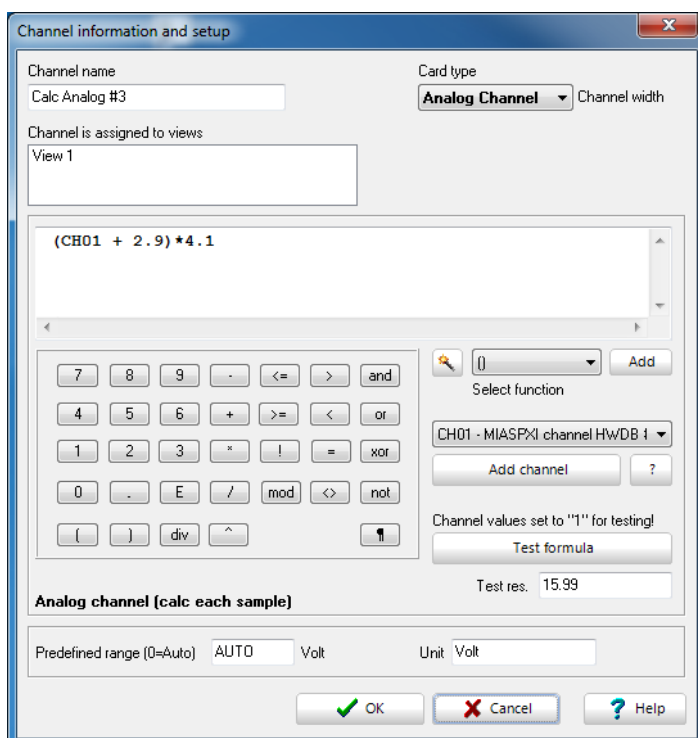


Figure 1: Example of HiRES Advanced Math software module

¹⁾ The prior version of the Data Sheet was 5.52-5/2.